

# RONDO

## Data Sheet

### RONDO SHEETERS MODELS SSO685C and SSO687C



#### Features:

- Four preset roller reduction rates, as well as a manual setting
- Final thickness stop ensures consistency
- Cutting pressure can be adjusted
- Synchro drive prevents overfeeding, shrinking, and tearing of dough sheet
- Non-rusting stainless steel base and tables

#### Technical Data

	SSO685C	SSO687C
Conveyor Belt Width	25"	25"
Roller Gap	1/64-1 3/4"	1/64-1 3/4"
Roller Diameter	26"	26"
Sheeting speed	23/ 5/8"/sec	23/ 5/8"/sec
Dimensions:		
• In working position	48" x 144"	48" x 156"
• In resting position	48" x 65"	48" x 71"

#### Dimensions:

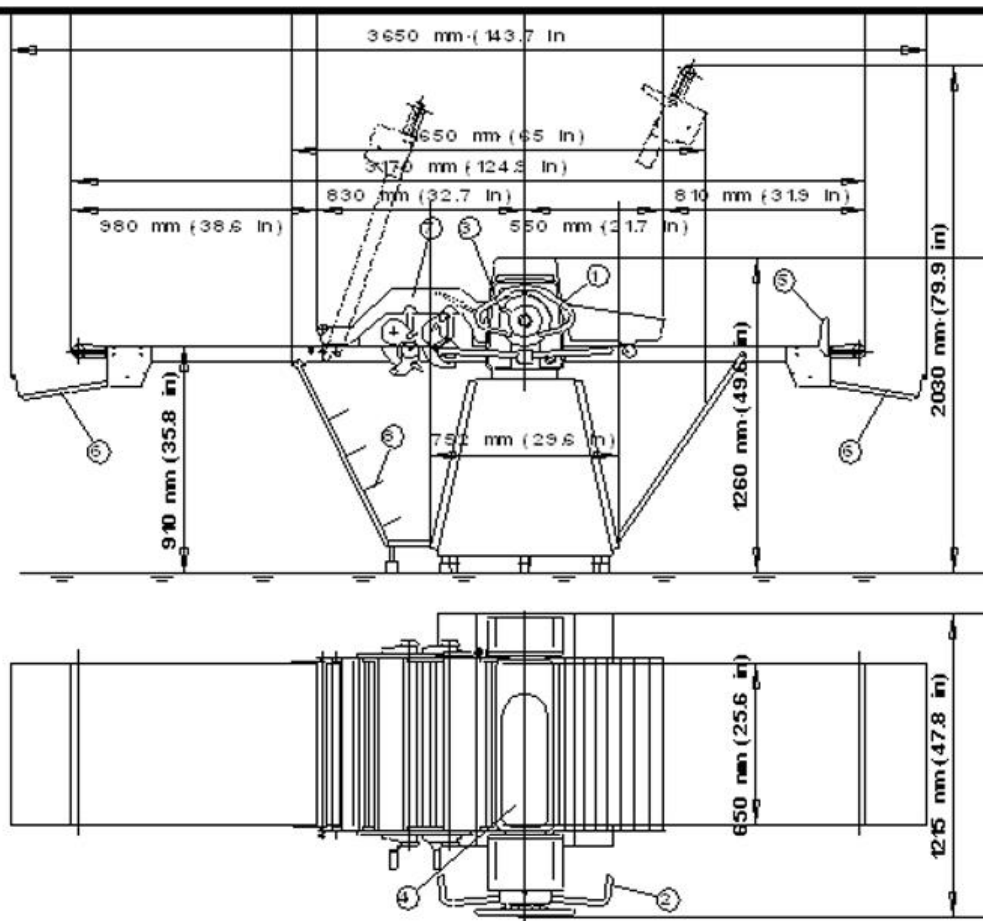
	SSO685C	SSO687C
Net weight:	672 lbs.	694 lbs.
Shipping Weight:	871 lbs.	893 lbs.
Crate Dimensions:	57" x 41" x 75"	57" x 41" x 75"

#### Electrical:

220 VAC, 3 phase, 60Hz, 7.2 Amps  
Supplied with Power cord and NEMA L15-20 Plug  
Special electrics also available.  
UL Listed and CE certified



**SSO685C**



**SSO687C**

